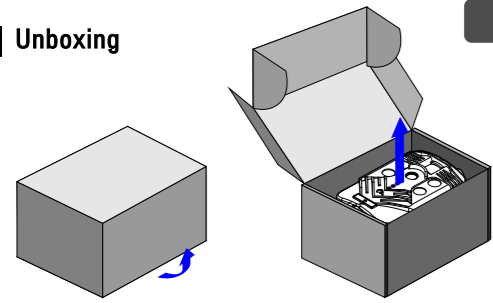


# User Manual for E3H Series

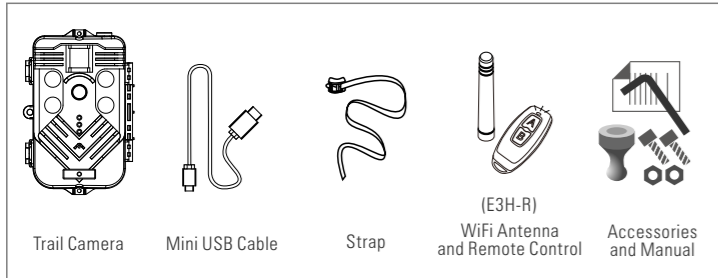
## Unboxing



## WiFi hotspot

Edition: E3H-V105  
2019-10-08

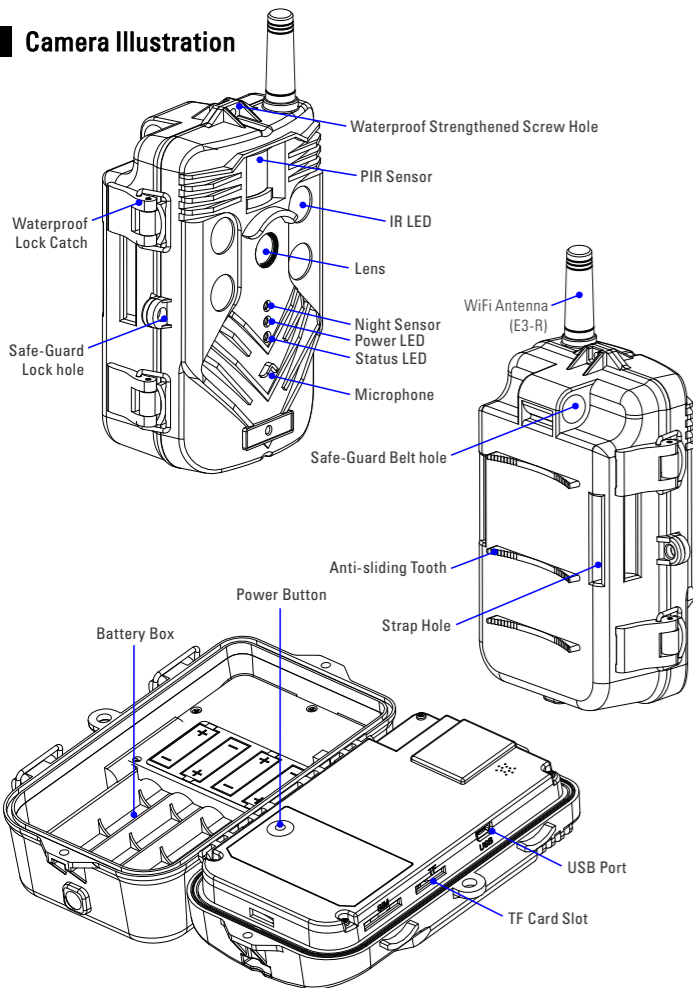
Take out the camera and accessories.



## Warnings and Cautions

- ▶ Do not remove camera privately.
- ▶ Please install the batteries with the correct polarity. Do not use the old and new batteries together.
- ▶ Don't touch the lens glass with your hands. Possible causes blur image.
- ▶ Termly Inspection. Please refer inspection to accredited service person.
- ▶ Do not use if there were any problem occurs.

## Camera Illustration

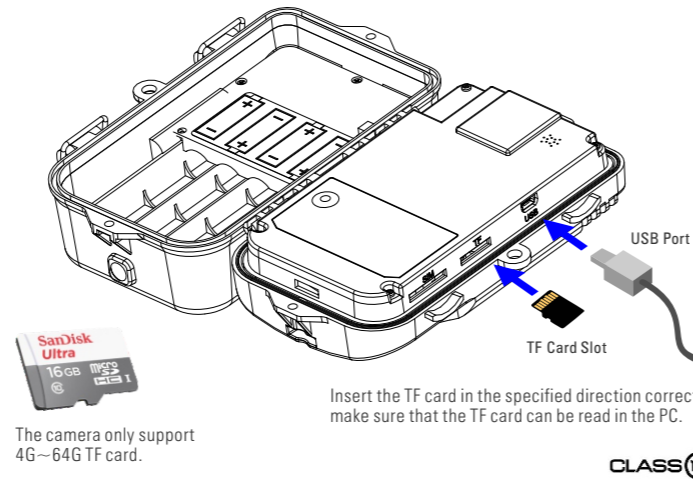


## Quick start steps

1. Insert the TF card, batteries and external antenna to the camera.
2. Install the APP to mobile phone. (refer to the detailed guide in point 5.)
3. Switch on the camera by remote control, white inductor or red button. ( refer to the detailed guide in point 4.)
4. Open the APP and connect the camera to the mobile phone by WIFI hotspot under the name ECS-XXXXX. If it needs to input the password, please input the password:12345678.
5. Then you can enter the APP operation interface, to make the camera parameter settings and other operations. (refer to the detailed guide in point 7.)

## Detailed guide

### 1 Installation of TF Card

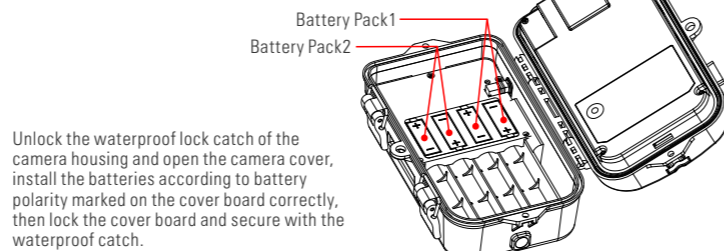


The camera only support 4G~64G TF card.

- ▶ TF Cards above C10 are recommended.
- ▶ If the TF card below C10 is used, it may lead to image mosaic, image loss or camera crash.

### 2 Battery Selection and Installation

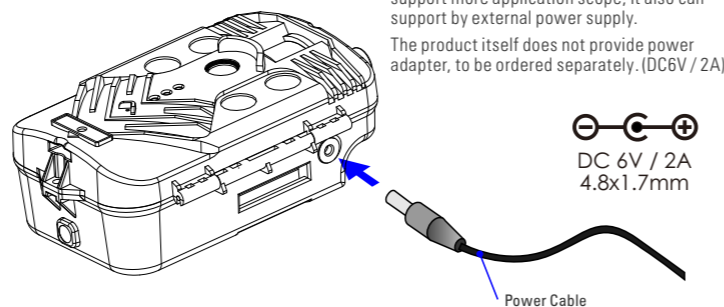
- 1000~2000mAh AA/1.2V
  - 1500~2400mAh AA/1.5V
  - 700~1200mAh AA/3.7V
- Battery Specifications: 14500/ AA. 4\*AA for each group.  
Choose low self-discharge battery as far as possible to reduce energy self-consumption.



Unlock the waterproof lock catch of the camera housing and open the camera cover, install the batteries according to battery polarity marked on the cover board correctly, then lock the cover board and secure with the waterproof catch.

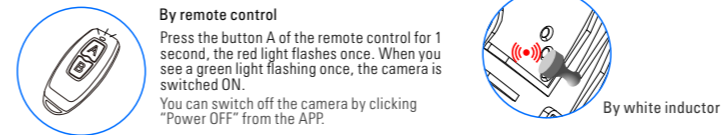
- ▶ When installing multi-group batteries, it's strictly prohibited to mixed use old batteries and new batteries, so as not to cause the camera works abnormal, or cause to battery leakage then damage the camera circuit.
- ▶ Please install the batteries according to battery polarity correctly, so as not to damage the camera.

### 3 External Power Supply



The camera is normally powered by battery. To support more application scope, it also can support by external power supply.  
The product itself does not provide power adapter, to be ordered separately. (DC6V / 2A)

### 4 Switch ON/OFF



▶ With the remote control, it will reduce the camera standby time.

#### Switch ON

Put the inductor near to the induction position for 3 seconds, take it away after hearing the sound of "bleep". Then the red indicator lights ON shows that the camera enters boot process. After that the green indicator lights ON shows that the WIFI is ready for use, the camera boot is complete.

#### Switching mode

When the camera on, the camera will be detected in short time (less than 2 seconds) and will switch between the test mode and work mode. When switching to work mode, the indicator light will be OFF, then you will hear "bleep" sound for 4 times and camera starts to work. When switching to test mode, the indicator light will be OFF, then you will hear "bleep" sound for 1 time, the red light will stay ON, green light will stay ON or blink.

#### Switch OFF

Put the inductor in the induction area lasts for 3 seconds, then you will hear the long last "bleep" sound, then the indicator light OFF, you will hear again the long last "bleep" sound, the camera switch off is completed.

The camera also can be turned off directly by clicking the shutdown button in the APP.

- ▶ If you don't use the camera for long time, make sure to take the batteries out of the camera, or the battery will be liquid leaked and damage the camera.
- ▶ When the inducting is invalid, there is an alternate power switch in the camera.

### 5 APP Download and Installation

Scan the below QR code with correspond mobile phone system to download and install the APP.



Android



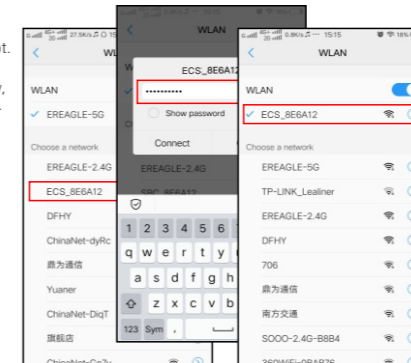
Apple (iOS)

### 6 Connecting to WIFI Hotspots

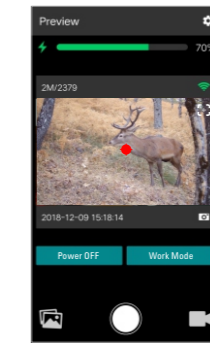
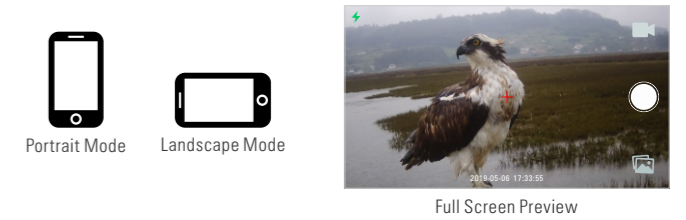
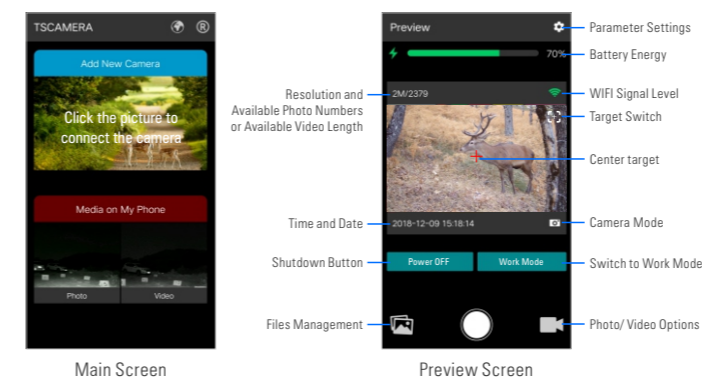
When the green indicator lights on, the mobile phone can search for the camera's WIFI hotspot. (ECS\_XXXXX)

If the green indicator light flashes continuously, that shows the WIFI is connected successfully. Original Password: 12345678

- ▶ If the WIFI connection is no any operation within 60 seconds, the system will disconnect WIFI automatically and switch to working mode.
- ▶ If the camera is disconnected from the WIFI connection, the system will switch to working mode automatically.



### 7 TSCamera APP



PIR Triggering

#### Shooting Testing

Shooting testing includes photo mode and video mode, can click the bottom-right icon to switch.

#### Full Screen Preview

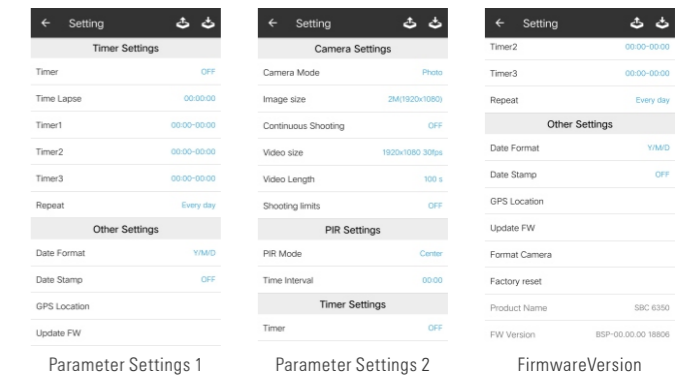
First need to close portrait mode. Rotate the mobile phone to transverse screen, then it will enter the full screen preview.

#### Testing for PIR Triggering

While the PIR is triggered, there is a red dot flashing in the central target position of the video preview screen.

#### Parameter Settings

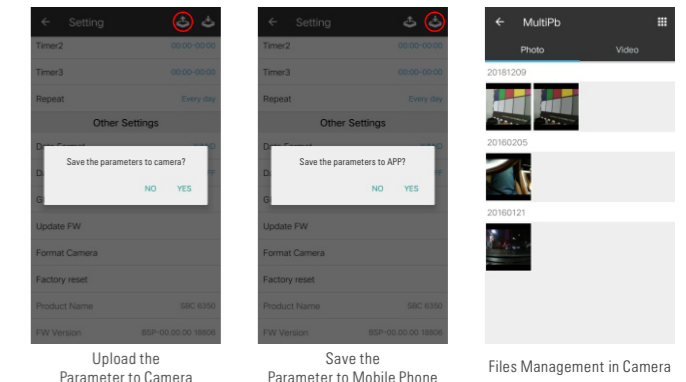
Click the upper-right icon to enter the interface of parameter setting, refer to the following figure guide.



Parameter Settings 1

Parameter Settings 2

FirmwareVersion



Upload the Parameter to Camera

Save the Parameter to Mobile Phone

Files Management in Camera

#### Quick Parameter Settings

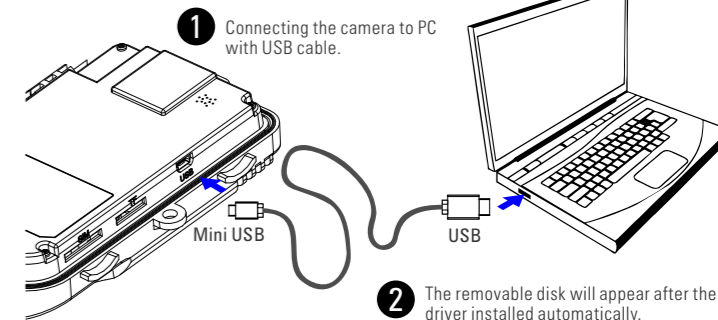
The user can save the current settings to the mobile phone in the interface of parameter setting.

When connecting to another new camera, the user can load the previous parameters directly with quick installation for batch setup.

#### Files Management in Camera

Click the bottom-left icon to enter the media library of camera, the user can view the files of picture and video that have been taken by the camera. Press and hold down the picture, it will pop-up the operation menu, select all, singled select, download, delete and other operations are available for choose.

### 8 Copy Camera Files to PC



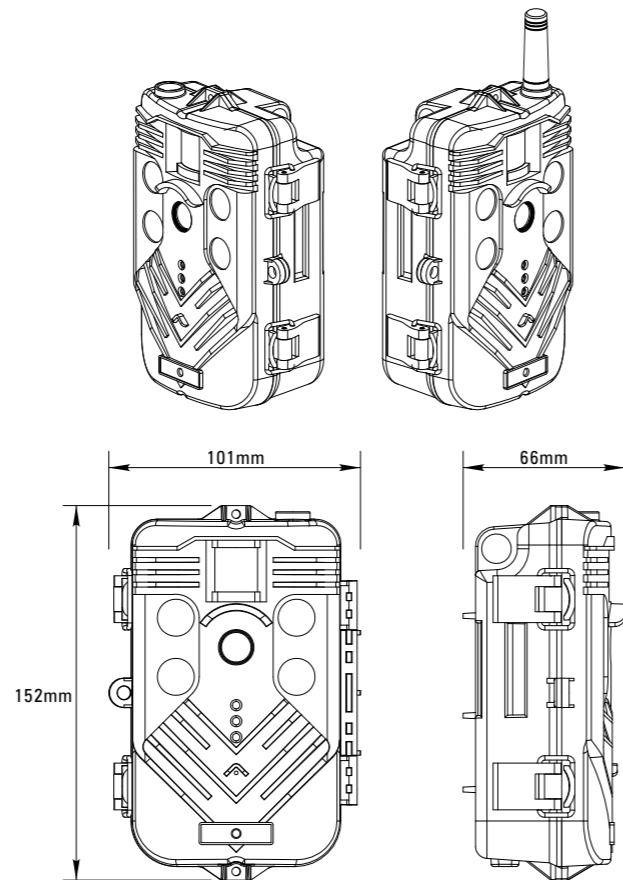
1 Connecting the camera to PC with USB cable.

2 The removable disk will appear after the driver installed automatically.

# E3H EAGLE TECHNOLOGY TRAIL CAMERA



## Dimensions



## Technical Specifications

Image/Video/Audio	
Image sensor:	5 Mega Pixels 1/2.5" NIR CMOS Sensor
Sensitivity (LED off):	0.001 Lux / F1.2 / 30IRE (LED OFF)
Effective Pixels:	2590 × 1944 / 5034.9K 4:3
Photo definition:	20M (5120 × 3840) 12M (4000 × 3000) 8M (3624 × 2448) 5M (2590 × 1944)
Shooting No.:	OFF / 2-5
Video definition:	1920 × 1080 / 60 FPS 1920 × 1080 / 30 FPS 1280 × 720 / 60 FPS 1280 × 720 / 30 FPS
Video length:	1 ~ 300s
Microphone:	48dB high sensitivity sound collection
Buzzer:	2700HZ, 85dB
Lens:	6.0mm HD fixed lens(H FOV:56°, V FOV:42°, F2.0)
Trigger time:	< 0.5 Sec
Photo + Video:	First photo, then video
Max Shooting:	OFF, 1 ~ 255

Trigger Alarm	
PIR Sensing Angle:	Horizontal: 50°, 2 + 5 area Fresnel Lens, each lens covers 10°
PIR Sensing Distance:	20M / 65.62ft (at 77°F / 25°C)
PIR Mode:	Main PIR / OFF
PIR Sensitivity:	Auto
Trigger interval:	00:00-59:59 Optional (Default: 01:00)

WIFI	
Connection mode :	2.4G WIFI, This version is only WIFI hotspot mode
Standards:	802.11b/g/n, 802.3, 802.3u
Wireless Encryption:	WEP / WPA / WPA2
Transmission Distance:	30M (Open Environment)

Remote Control	
Remote Control Enabled	ON / OFF, The key can't remote control the camera when it's "OFF".
Connection mode :	433MHZ, Button Control, A: Test mode, B: Work mode
Wireless Encryption:	4-digit key, Dynamic encryption
Pairing Key Mode:	Remote control instructions for details.
Transmission Distance:	60M (Open Environment)

Night vision	
Light Source:	Highlight IR LED, 940nm
IR Flashlight Distance:	30M
Day/Night Mode:	Day/night, Auto Switching
Light Level:	Constant Current: 700mA
IR-CUT:	Built-in

User Interface Stamp	
Stamp Switch:	ON / OFF
Stamp Content:	Camera Name, Shooting date, Moon phase, Temperature, Battery Power

Timer	
Timer Switch:	ON / OFF
Time Interval Setting:	Three periods and weekly repetitions can be set daily.
Timer Interval:	0 ~ 24 Hour

Product Safety	
Hardware Security Configuration:	Padlock installation, Anti-theft lock hole
System Safety:	Connect the camera with a password.
Battery Protection :	Battery anti-backconnection protection, Warning prompt when installation error occurs.
Low Power Protection:	Battery power is less than 10%, automatic power-off protection. Low-power buzzer alarm.
Protection for No Operation:	Test mode 120 seconds no operation, auto change to Detection Mode. After Connecting to WIFI, 60 seconds no operation is auto change to Detection Mode.

Data Storage	
Storage Medium:	TF Card, 4G ~ 64G (Class 10)
TF Card Cycle Save:	ON / OFF

APP	
System Requirements:	iOS 7.0 or Android 4.4 above.
Real-time Video Preview:	Only supports AP mode, Direct Video Connection, easy to install and test.
APP Function:	Installation target, parameter setting, time synchronization, shooting test, power warning, TF card warning, PIR test, full screen preview
Quick Parameter Setting:	Supported
Online Data Management:	Video, Photos, Events: Support online Viewing, Deletion, Download

Power Supply and Power Consumption	
Battery Powered:	4A × AA/8A × AA Battery (1.2V/1.5V/3.7V)
Standby Time:	10 ~ 14 Month (8 × AA/1.5V)
External Power Supply:	DC 6V / 2.0A
Standby Power:	< 80uA (0.00008A / 6V)
Power Consumption:	200 mA (800mA LED ON)

Others	
Connector:	DC Input, TF Card, USB Port, Power Switch
Installation Mode:	Strap, Tripod nail
Operating Temperature Humidity:	-30°C ~ +70°C / 30% ~ 90%RH
Storage Temperature Humidity:	-40°C ~ +85°C / 0% ~ 90%RH
Waterproof Grade:	IP68 (Dust proof / Submerging test)
Dimension:	152 x 101 x 66mm
Net Weight:	266g
Gross Weight:	485g
Certificate:	FCC, CE, RoHS

► Design and specifications are subject to change without notice.

## Functions and Features

- ▶ 1/2.5" 5 Megapixel Near IR image sensor, Minimum illumination up to 0.001Lux (LED off).
- ▶ 6.0mm HD fixed lens (H FOV: 56°, V FOV: 42°, F2.0).
- ▶ H.264 video encoding format; 1080P/60FPS full HD video recording; Audio and Video Synchronized Recording; 1080P60/1080P30/720P60 is optional.
- ▶ Image sizes are available for 20M/12M/8M/5M; maximum support 5 continuous shooting pictures.
- ▶ The PIR triggered time is 0.5 seconds.
- ▶ The standby working time can be up to 10~14 months with 80uA ultra-low standby power consumption.
- ▶ Using PIR heat source sensing design, the detecting distance can reach up to 20 meters and the detecting angle is 50°. The sensitivity is higher and more accurate.
- ▶ Support photo and video mode, after taking picture, it will record video automatically, it's more convenient to observe the scene behavior.
- ▶ Support nighttime capturing with 940nm invisible infrared illumination, effective distance up to 30 meters.
- ▶ With built-in fully sealed HD infrared cut-off device, the daytime colors are more beautiful, and the IR-cut switching is more stable and reliable.
- ▶ Support 4 × AA/ 8 × AA multi-group 1.2V/1.5V/3.7V alkaline batteries.
- ▶ Using precision structure, up to IP68 (dust proof /waterproof); camouflage design, easy to integrate with the natural environment.
- ▶ Support anti dismantling chain and protection lock to ensure the equipment safety.
- ▶ Support TF card up to 64G.

- ▶ Support WiFi hotspot mode. Real-time video transmission.
- ▶ Support remote control for camera, the control distance can reach 60m (in the open environment)
- ▶ TSCAMERA Mobile App. Support video preview, shooting test, PIR test, installation target, parameter setting, file management, TF card warning, power warning.
- ▶ App live video preview for intuitive and accurate installation and adjustment.
- ▶ App camera parameter settings, simpler and faster; no need complex operation.
- ▶ App camera file management, view, delete, download, sync, etc.
- ▶ Automatic synchronous calibration of camera time when the app is connected to the camera
- ▶ Support character overlay function, can show device name, time, temperature, and moon phase on the photos.
- ▶ The WIFI password can be reset through the APP, which is more secure and reliable.
- ▶ Support time lapse function, 3 periods per day can be set along with the time intervals, and can repeat per week.
- ▶ Support battery reverse connecting alarm to prevent error installation from damaging the camera.
- ▶ Support USB data connection and APP client quick parameter settings.
- ▶ If there is no any operation, it will shutdown automatically and switch to Trigger Snap Mode mode.
- ▶ Users protection are paired with WiFi password to ensure data security.
- ▶ If low battery, it will shutdown automatically.

## Product Failure Judgment and Maintenance

If there are faults with the camera, please refer to the following troubleshooting guides. If the problem mentioned in the guide can't be solved, or there are some other problem not mentioned, please contact your local dealer.

Common problem	Self checking and Question Solution
<b>The camera does not startup</b>	Check that if the batteries are installed correctly. The external power supply is open-circuit or not. Whether the size of TF card meets the requirements. Startup the camera needs to sense for 3 seconds in the sensing area. Try booting with the alternate power button.
<b>Always take B/W photos</b>	Whether there are other objects block in front of the photosensitive sensor of the camera. Check if the light of the application environment is dark.
<b>PIR can not trigger</b>	Check parameter settings, whether the PIR mode is set to the "Main PIR".
<b>Shutdown auto in Test mode</b>	Check if the power supply is normal or if there is no operation for a long time.
<b>Blurred image</b>	Check the lens glass for water stains, fingerprints and other dirt, clean with a dust-free cloth. Whether the camera shake when shooting, can fix the camera and try to take photos again. Whether the target is very close to the camera, the best clear shooting range of the camera is between 3 and 30 meters. The light is dark and the object moves too fast, which will cause the trailing blur images.
<b>TF card cannot be stored</b>	Whether the TF card is damaged, check whether it can be read normally on the PC.
<b>Unable to full screen preview</b>	Check if the portrait lock setting of your phone is off.
<b>Unable to connect the camera</b>	Check that whether the camera WIFI network is connected to the camera's WIFI hotspot properly.
<b>Video with mosaics or confusion</b>	Check whether the TF card is a high-speed card above C10. Considering the read speed of the card, it is suggested to copy the video file to PC and play again.

**Correct Disposal of This Product.**  
(Waste Electrical & Electronic Equipment)

(Applicable in the European Union and other European countries with separate collection system)

This marking shown on the product or its literature, indicates that it should not be disposed with other household wastes at the end of its working life.  
To prevent harm to the environment or human health from uncontrolled waste disposal, please separate this from other types of wastes and recycle it responsibly to promote the sustainable reuse of material resources.  
Household users should contact either the retailer where they purchased this product, or their local government office, for details of where and how they can take this item for environmentally safe recycling.  
Business users should contact their supplier and check the terms and conditions of the purchase contract.  
This product should not be mixed with other commercial wastes for disposal.