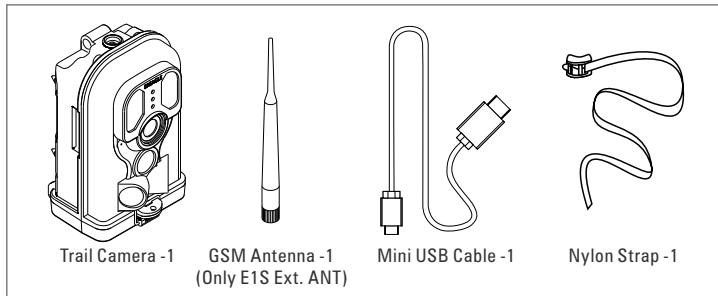
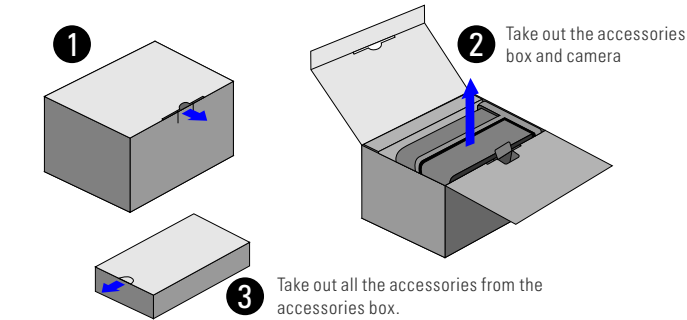


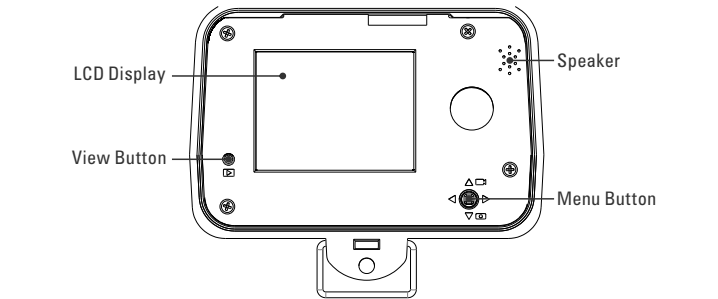
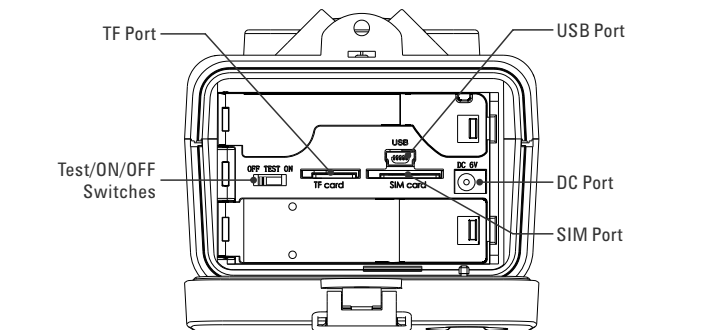
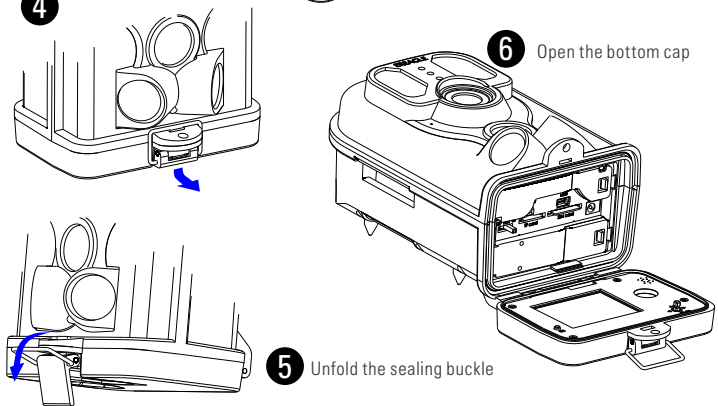
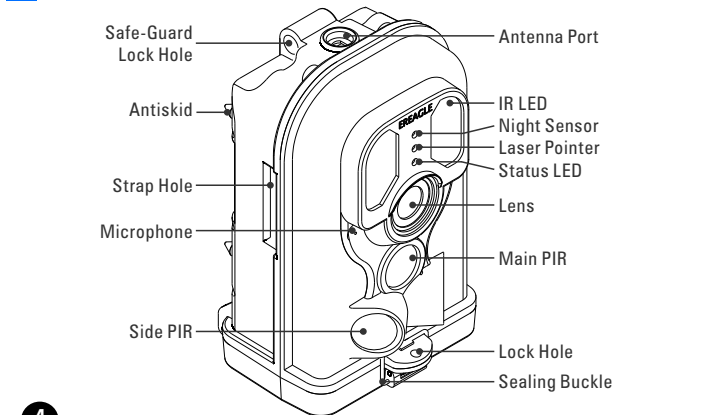
User Manual for E1 Series

1 Unboxing

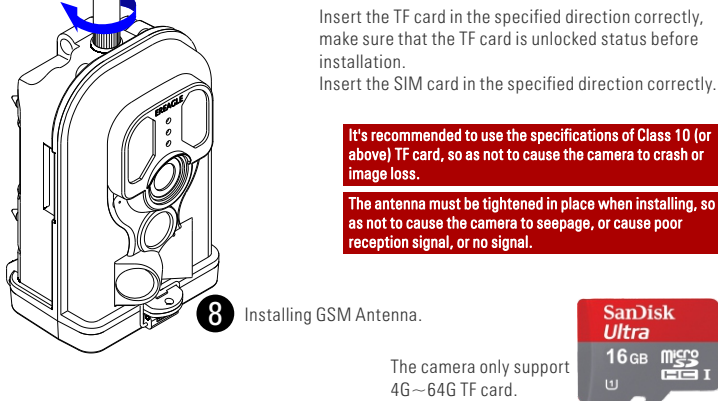
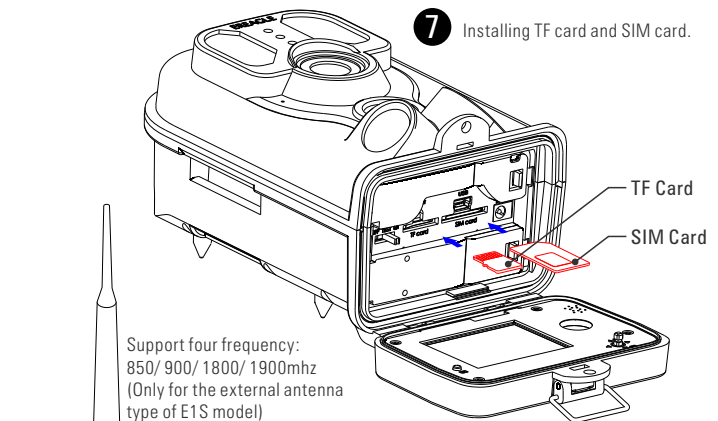
Please refer to the e-version user manual for more details.



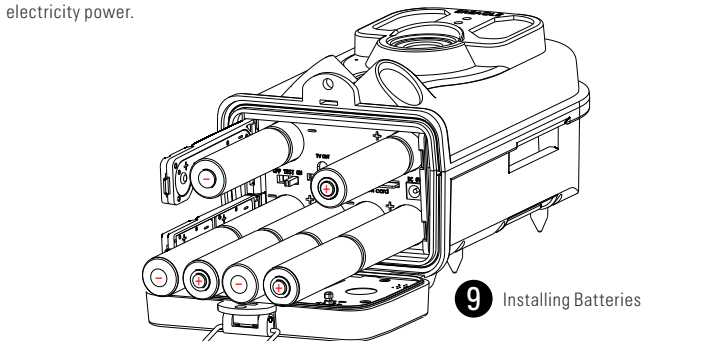
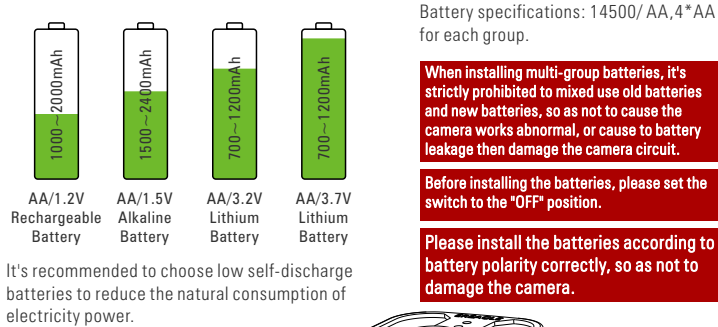
2 Camera Illustration



3 The Installation of Antenna/ TF card/ SIM card.

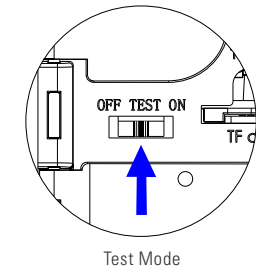


4 Selection and Installation of Batteries



After opening the camera bottom cap, it's easily to find the battery holder by unfolding the lock catch of cover board, install the batteries according to battery polarity marked on the cover board correctly, then lock the cover board.

5 Boot and Setting



Test Mode

Put the switch to TEST position, the camera will be into image previewing interface. In TEST mode, can take photos manually or record testing video, check with laser alignment, overview photos and videos, set parameters and so on.

In real-time image previewing interface, upward the "Menu" button quickly switch into "camera" mode; downward the "Menu" button quickly switch into "video" mode; rightward the "Menu" button can trigger the shooting manually; leftward the "Menu" button can open the laser positioning light. Press the "View" button can display the photos and videos; press the "Menu" button into the menu settings interface.

In this mode, the user can test the range of PIR sensing by moving in front of the camera, mainly in the range of 3 to 20 meters. At this time, if the blue indicator flashes means that the main PIR is triggered. The test can be used to adjust the sensing range, so can install the camera in accurate positioning.

On Mode

Put the switch to "ON" position, the red indicator light will start flashing, wait about 10 seconds, the red light bum steady and then turn off. At this time, the camera self-test is done and access to the automatic infrared capture state.

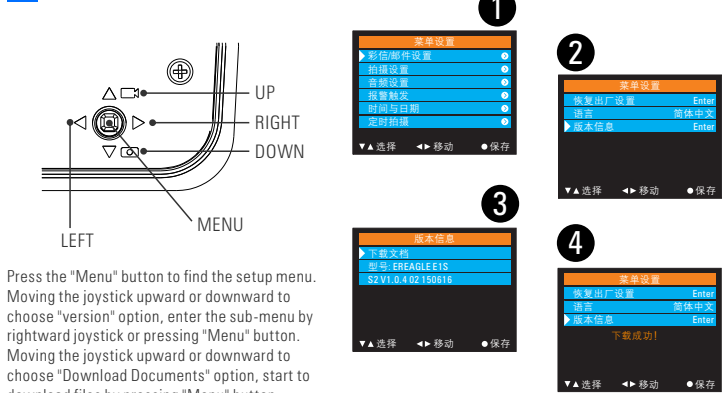
After entering "ON" mode, no longer need manual intervention, the system will automatically shooting according to your parameter settings, when a heating body into the surveillance area, it will capture photo or video and store to the TF card automatically.

In the "ON" mode, the red indicator light flashes quickly, indicating that it is low battery power. Kindly check the batteries are installed correctly or not. Or replace the new batteries.

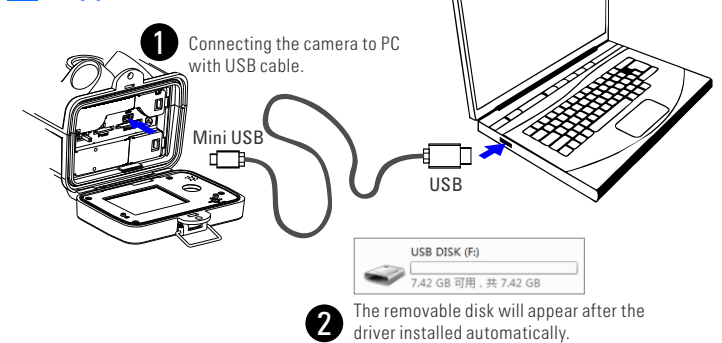
OFF Mode

Put the switch to OFF position, the camera will disconnect the power supply automatically. When the camera turn off, it will no longer consume power by itself.

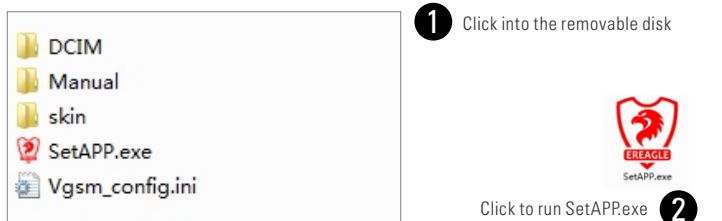
6 Download user manual and software



7 Copy camera files



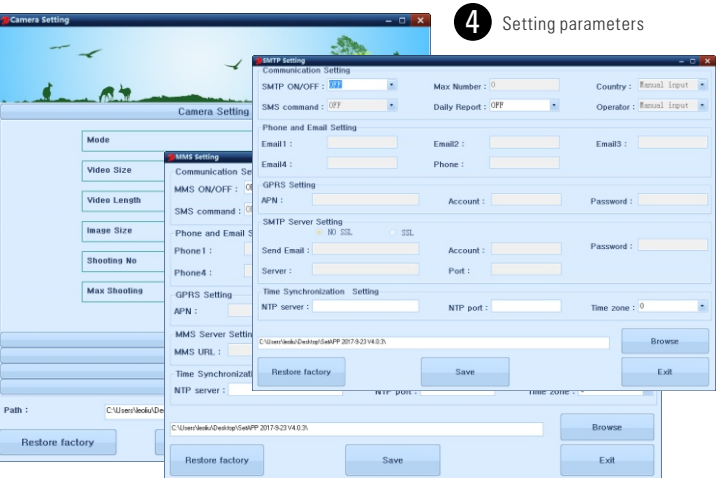
8 Batches setting camera quickly by PC-side software



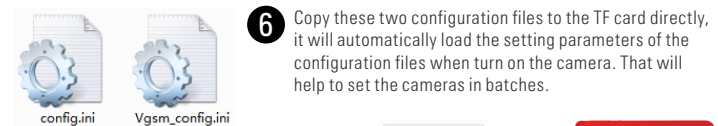
Select the model, language and setting subject

The default save path is the root directory where SetAPP.exe is located.

When copying an application from removable disk to local disk, need to copy the SetAPP.exe and skin folders at the same time and ensure that they are saved in the same directory.



5 After the parameter settings are done, click "Save". The parameter configuration file will be automatically generated to the specified location.



9 Update of Camera Firmware

Copy the Firmware. bin upgrade file to the TF card. The dialog box will be loaded automatically when the camera enters "TEST" mode. Select "YES" according to the prompts. After the upgrade is done, the camera screen will turn off automatically, please reset the switch and then restart the camera.

After the upgrade is done, the TF card must be formatted, so that the camera can work properly.

When the TF card contains a Firmware. bin file, the camera might works abnormal in the "ON" mode.

A Outdoor Installation and location Selection

